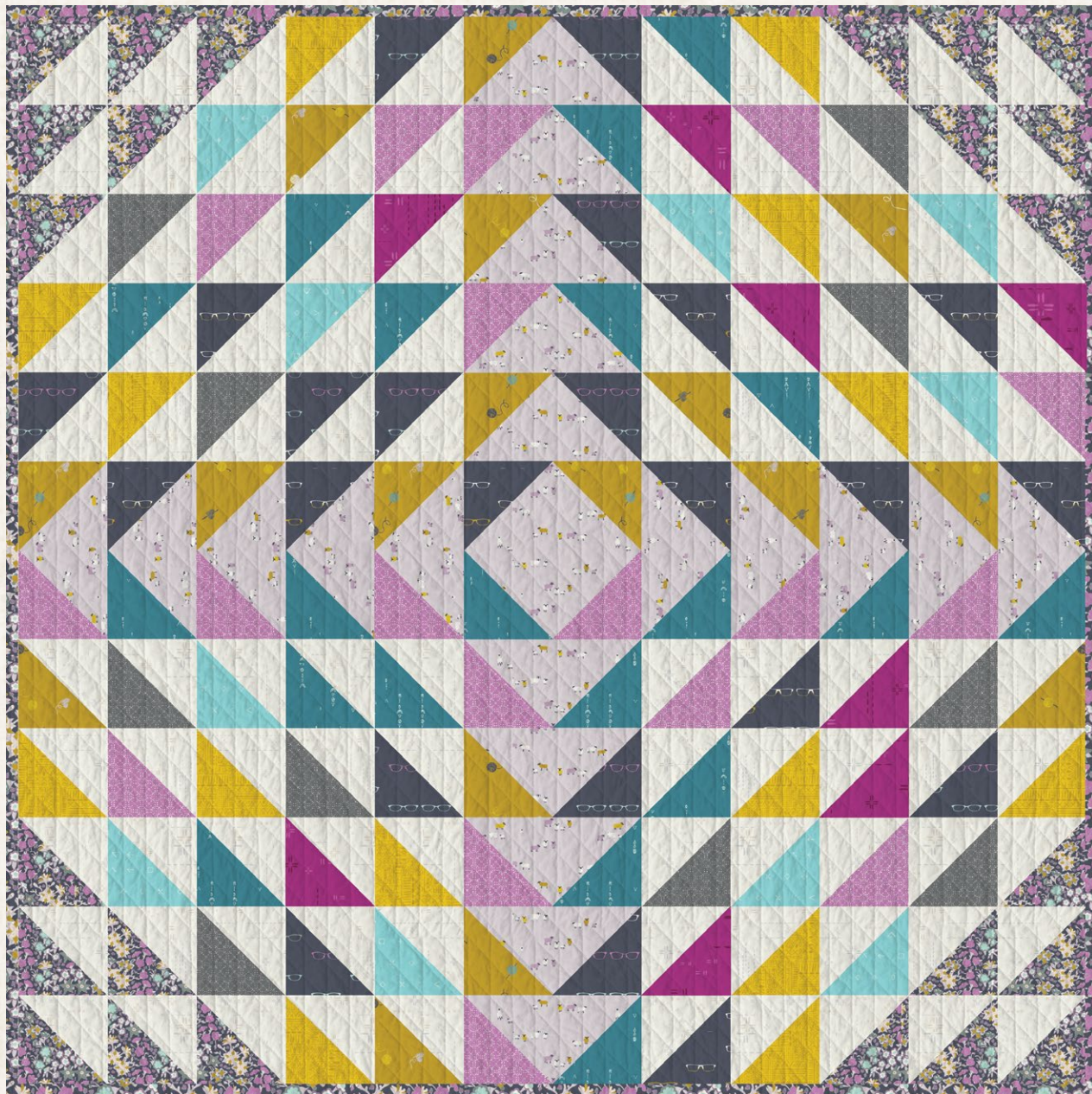


MAKERS *gonna* MAKE ✚



ANGLES

FREE PATTERN

XX

A DIVISION OF AGF

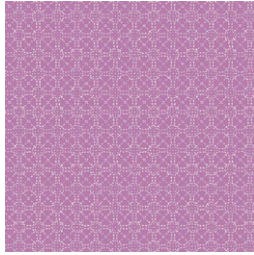
MAKERS *gonna* MAKE

QUILT DESIGNED BY AGFstudio



Hooked

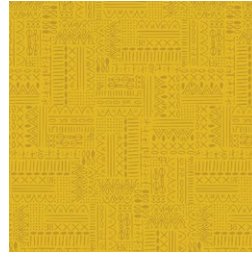
FABRICS DESIGNED BY MISTER DOMESTIC



HKD-22651
SPACES IN BETWEEN SILK



HKD-22652
READERS



HKD-22653
HIDDEN STITCHES



HKD-22654
IF THEY WERE REAL



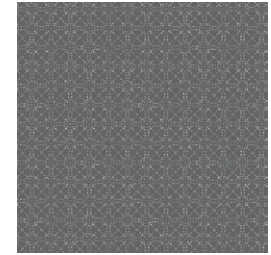
HKD-22656
WOOL ORIGINS



HKD-22658
SYMBOLS ARRANGED



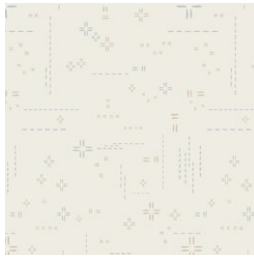
HKD-22659
SPUN YARN



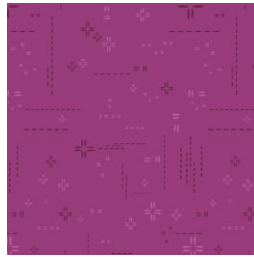
HKD-22660
SPACES IN BETWEEN WOOL



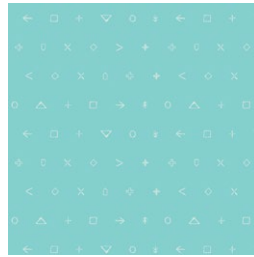
ADDITIONAL BLENDERS FOR THIS PROJECT



DSE-700
CLOUD



DSE-707
ORCHIDBERRY



ICE-209
CHARACTER SKY

MAKERS gonna MAKE

FINISHED SIZE | 72" x 72"

FABRIC REQUIREMENTS

Fabric A	HKD-22651	½ yd.
Fabric B	HKD-22652	½ yd.
Fabric C	HKD-22653	½ yd.
Fabric D	HKD-22654	¾ yd.
Fabric E	HKD-22656	1½ yd.
Fabric F	HKD-22658	½ yd.
Fabric G	HKD-22659	½ yd.
Fabric H	HKD-22660	⅓ yd.
Fabric I	DSE-707	⅓ yd.
Fabric J	DSE-700	2 yd.
Fabric K	ICE-209	⅓ yd.

BACKING FABRIC

HKD-22650 5 yds (Suggested)

BINDING FABRIC

Fabric **D** HKD-22654 (Included)

CUTTING DIRECTIONS

¼" seam allowances are included.
WOF means width of fabric.

- Ten (10) 6⅞" squares from fabric **A**.
- Twelve (12) 6⅞" squares from fabrics **B** and **D**.
- Seven (7) 6⅞" squares from fabric **C**.
- Twenty-two (22) 12½" x 6½" rectangle from fabric **E**.
- Eleven (11) 6⅞" squares from fabric **F**.
- Nine (9) 6⅞" squares from fabric **G**.
- Five (5) 6⅞" squares from fabrics **H** and **K**.
- Four (4) 6⅞" squares from fabric **I**.
- Fifty (50) 6⅞" squares from fabric **J**.

CONSTRUCTION

Sew all rights sides together with ¼" seam allowance.

HST CONSTRUCTION

- For this project we will start with the HST combinations.
- Bring one 6⅞" square from fabric **A** and one 6⅞" square from fabric **J**.

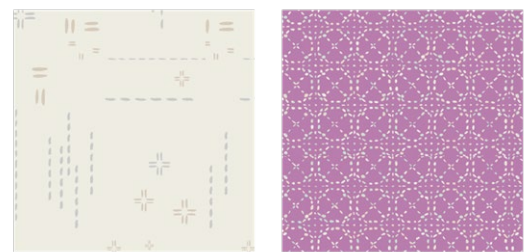


DIAGRAM 1

- Using a fabric marker, trace one line across the 6⅞" square from fabric **J**.
- Then place it on top of the fabric **A** square RSF together and align them.
- Sew ¼" away from the traced line in both sides of the line.

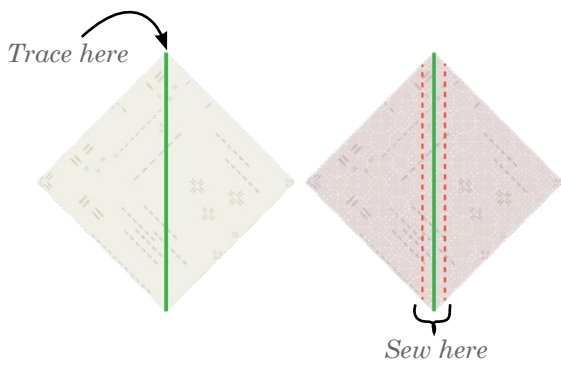


DIAGRAM 2

- After you are done with the two seamed lines cut on top of the traced line.
- You'll end up with two **AJ** HST.
- Open them up and iron press.

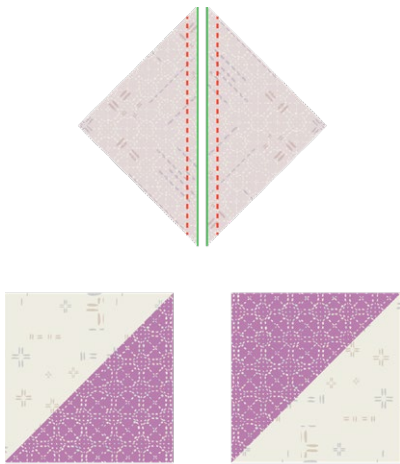


DIAGRAM 3

- Now that you learned the HST construction repeat the previous procedure for the remaining HST combinations.
- There are nine different HST combinations needed for this quilt top, refer to the diagram below for HST combinations and quantities.

AJ		7
BJ		12
CJ		14
DJ		24
FJ		9
GJ		6
HJ		10
IJ		8
KJ		10

DIAGRAM 4

FLYING GEESE CONSTRUCTION

- Moving on to the Flying Geese construction, you will be making eight different Flying Geese combinations.
- Start cutting in half across all the remaining $6\frac{7}{8}$ " squares from fabrics **A**, **B**, **F** and **G**.
- Set aside.

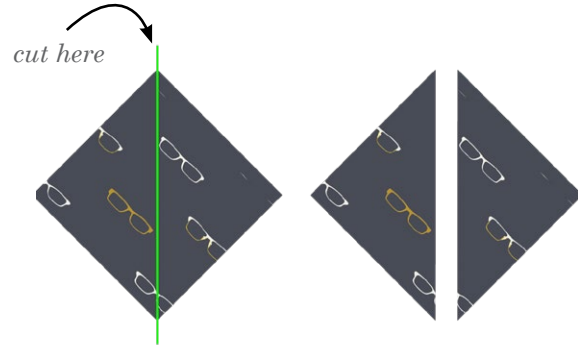


DIAGRAM 5

- Then, bring one $12\frac{1}{2}$ " x $6\frac{1}{2}$ " rectangle from fabric **E**, one half square from fabric **B** and one half square from fabric **F**.
- Place the fabric **B** half square triangle on top of the fabric **E** rectangle.
- Refer to the diagram below for half square triangle placement, it should be on the left side of the rectangle, RSF together, align it $\frac{1}{4}$ " from the center.
- When placed properly sew $\frac{1}{4}$ " away from the half square hypotenuse edge.
- Trim the rectangle corner excess fabric and press open.

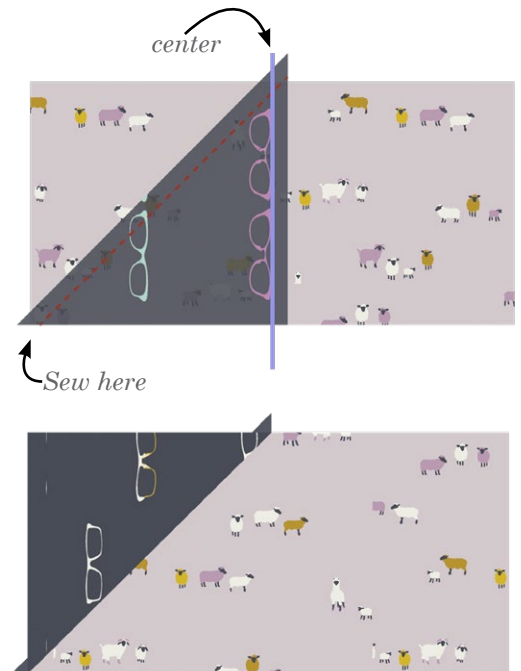


DIAGRAM 6

TOP ASSEMBLY

- Now, take the fabric **F** half square and place it on top of the fabric **E** rectangle.
- Refer to the diagram below for half square triangle placement, it should be on the right side of the rectangle, RSF together and align it ¼" from the center.
- When placed properly sew ¼" away from the half square hypotenuse edge.
- Trim the rectangle corner excess fabric and press open.
- Voila! you have your first **BEF** flying geese.

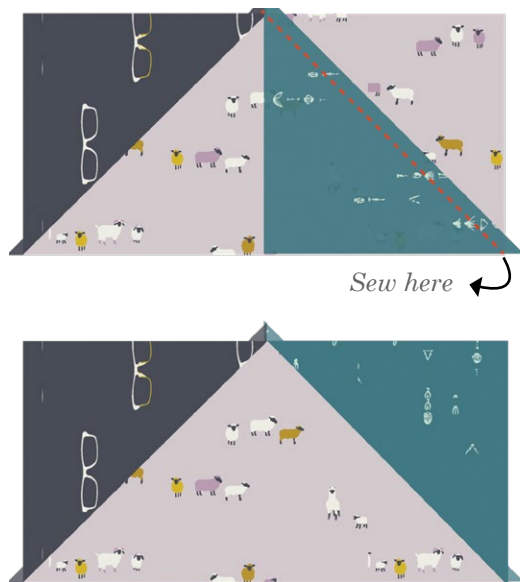


DIAGRAM 7

- Repeat the previous procedure for the remaining flying geese combinations.
- Refer to the diagram below for combinations and quantities.

BEF		3
FEB		2
AEF		3
FEA		3
BEG		3
GEB		3
AEG		3
GEA		2

DIAGRAM 8

TOP ASSEMBLY

Sew rights sides together.

- Using all the HST and Flying geese make eleven rows.
- Refer to the diagrams for rows placement and directions.

ROW #1:



ROW #2:



ROW #3:



ROW #4:



ROW #5:



- Skip Row #6 for now.
- Move on with Row #7.
- Be aware that from now on the flying geese is facing down.

ROW #7:



ROW #8:



ROW #9:



ROW #10:

DJ DJ HJ BJ KJ FEA FJ CJ IJ HJ DJ



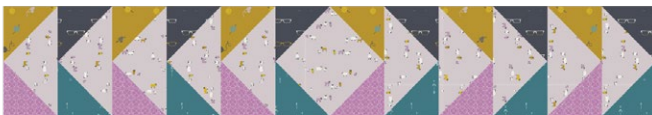
ROW #11:

DJ DJ DJ CJ GJ FEA BJ CJ DJ DJ DJ



- Continue with row six, use all the remaining flying geese pieces and arrange them as shown in the diagram.

ROW #6:



- Now arrange the rows from 1-11 and attach them together.



QUILT ASSEMBLY

Sew rights sides together.

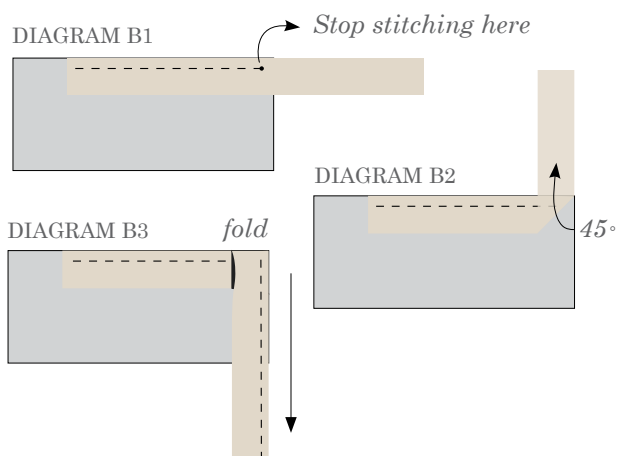
- Place BACKING FABRIC on a large surface wrong side up. Stretch it with masking tape against that surface.
- Place BATTING on top of backing fabric.
- Place TOP on top of the batting with right side facing up. Smooth away wrinkles using your hands.
- Pin all layers together and baste with basting thread, using long stitches. You can also use safety pins to join the layers.
- Machine or hand quilt starting at the center and working towards the corners. Remember that quilting motifs are a matter of personal preference. Have fun choosing yours!
- After you finished, trim excess of any fabric or batting, squaring the quilt to proceed to bind it.

BINDING

Sew rights sides together.

- Cut enough strips $1\frac{1}{2}$ " wide by the width of the fabric **D** to make a final strip 298" long. Start sewing the binding strip in the middle of one of the sides of the quilt, placing the strip right side down and leaving an approximated 5" tail. Sew with $\frac{1}{4}$ " seam allowance (using straight stitch), aligning the strip's raw edge with the quilt top's raw edge.
- Stop stitching $\frac{1}{4}$ " before the edge of the quilt (DIAGRAM B 1). Clip the threads. Remove the quilt from under the machine presser foot. Fold the strip in a motion of 45° and upward, pressing with your fingers (DIAGRAM B2). Hold this fold with your finger, bring the strip down in line with the next edge, making a horizontal fold that aligns with the top edge of the quilt (DIAGRAM B3). Start sewing at $\frac{1}{4}$ " of the border, stitching all the layers. Do the same in the four corners of the quilt.

- Stop stitching before you reach the last 5 or 6 inches. Cut the threads and remove the quilt from under the machine presser foot. Lay the loose ends of the binding flat along the quilt edge, folding the ends back on themselves where they meet. Press them together to form a crease. Using this crease as the stitching line, sew the two open ends of the binding with right sides together (you can help yourself marking with a pencil if the crease is difficult to see).
- Trim seam to $\frac{1}{4}$ " and press open. Complete the sewing. Turn binding to back of the quilt, turn raw edge inside and stitch by hand using blind stitch.



XXXXXXXXXXXXXXXXXXXXXXXXXXXXXXXX

*Congratulations
& enjoy*

XXXXXXXXXXXXXXXXXXXXXXXXXXXXXXXX



artgalleryfabrics.com

NOTE: While all possible care has been taken to ensure the accuracy of this pattern, We are not responsible for printing errors or the way in which individual work varies.

Please read instructions carefully before starting the construction of this quilt. If desired, wash and iron your fabrics before starting to cut.

© 2020 Courtesy of Art Gallery Quilts LLC. All Rights Reserved.